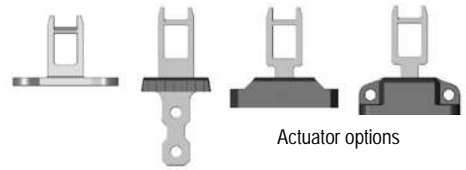


# Kobra - Tongue Switches – Type K-15

**New**



Standard    Flat    Plastic Flexible    Heavy Duty Flexible

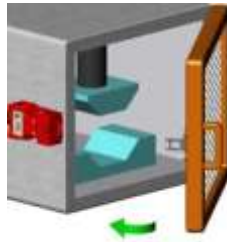


Actuator options

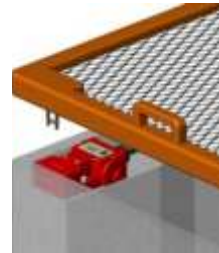
The switch head can be rotated through 180 degrees to provide ease of mounting and offer 4 different actuator entry positions

**Features:**

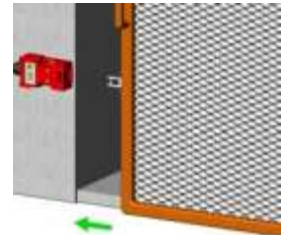
- High specification polyester body material
- Plastic or Stainless Steel Head
- 3 conduit entries M20 or 1/2" NPT
- Compact fitting 54mm wide 86mm long 40mm fixing
- IP67 enclosure protection – hinged lid
- 3 pole contact blocks
- Quick connect versions



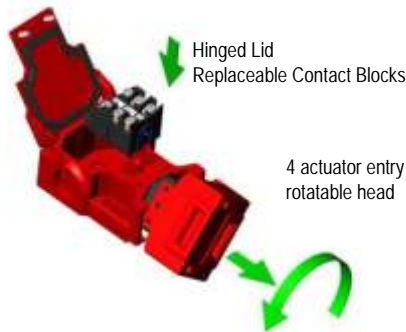
Hinged Guard



Lift off Guard



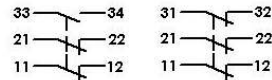
Sliding Guard



Hinged Lid  
Replaceable Contact Blocks

4 actuator entry positions  
rotatable head

Contact blocks provide positively operated safety contacts to IEC 947-5-1

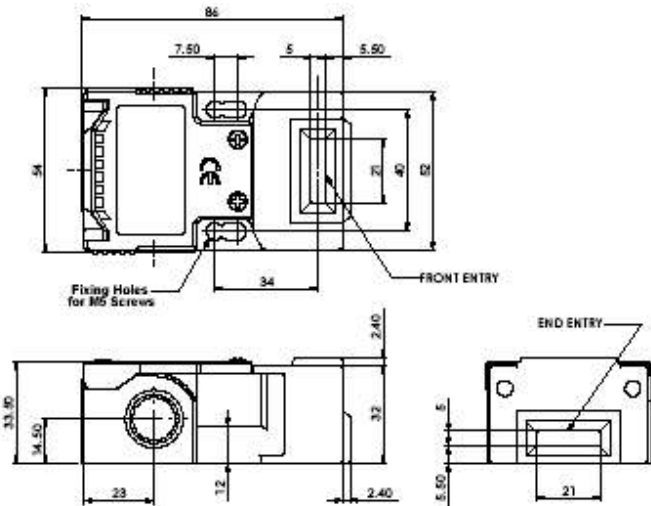


2NC 1NO    3NC

- Conforming to standard EN1088, IEC 947-5-1, UL508
- Approvals cULus, TUV
- Utilization Category AC15 A300 3A.
- Thermal Current (Ith) 10A
- Rated Insulation Voltage 600VAC
- Rated Impulse Withstand Volt 2500VAC
- Insulation Resistance 100M? min.(DC500V)
- Contact Resistance 25m? max. (initial)
- Travel for Positive Opening 8mm
- Man. Actuation Frequency 2 cycle/sec
- Case Material UL approved glass-filled polyester
- Actuator Material Stainless steel
- Actuator entry minimum radius 175mm Standard 60mm Heavy Duty
- Enclosure Protection IP67
- Operating Temperature -25°C to 80°C
- Mechanical Life Expectancy 1 x 10<sup>6</sup> Cycle min.
- Vibration IEC 68-2-6, 10-55Hz+1Hz, Excursion: 0.35mm, 1 octave/min
- Conduit Entry Various (See Sales Part Numbers)
- Fixing 2 x M5

**Contact operation at withdrawal of actuator**

2NC 1NO	7.8	7.0	0 mm	3NC (1NO)	7.8	7.0	0 mm
11/12	Open			11/12	Open		
21/22	Open			21/22	Open		
33/34			Open	31/32	Open		



Sales Number				
	Contacts	M20	1/2"NPT	QC
Kobra K-15 Switch	2NC 1NO	207001	207002	207003
Kobra K-15 Switch	3NC	207004	207005	207006
Kobra Actuator	Standard	Add A to Sales Part Number		
Kobra Actuator	Flat	Add F to Sales Part Number		
Kobra Actuator	Plastic Flexible	Add PF to Sales Part Number		
Kobra Actuator	Heavy Duty Flexible	Add HF to Sales Part Number		
Stainless Steel Head Version		Add SS to Sales Part Number		

Ordering Example: Kobra K-15 M20 2NC 1NO with Standard Actuator and Stainless Steel Head

Part No. 200704-A-SS